



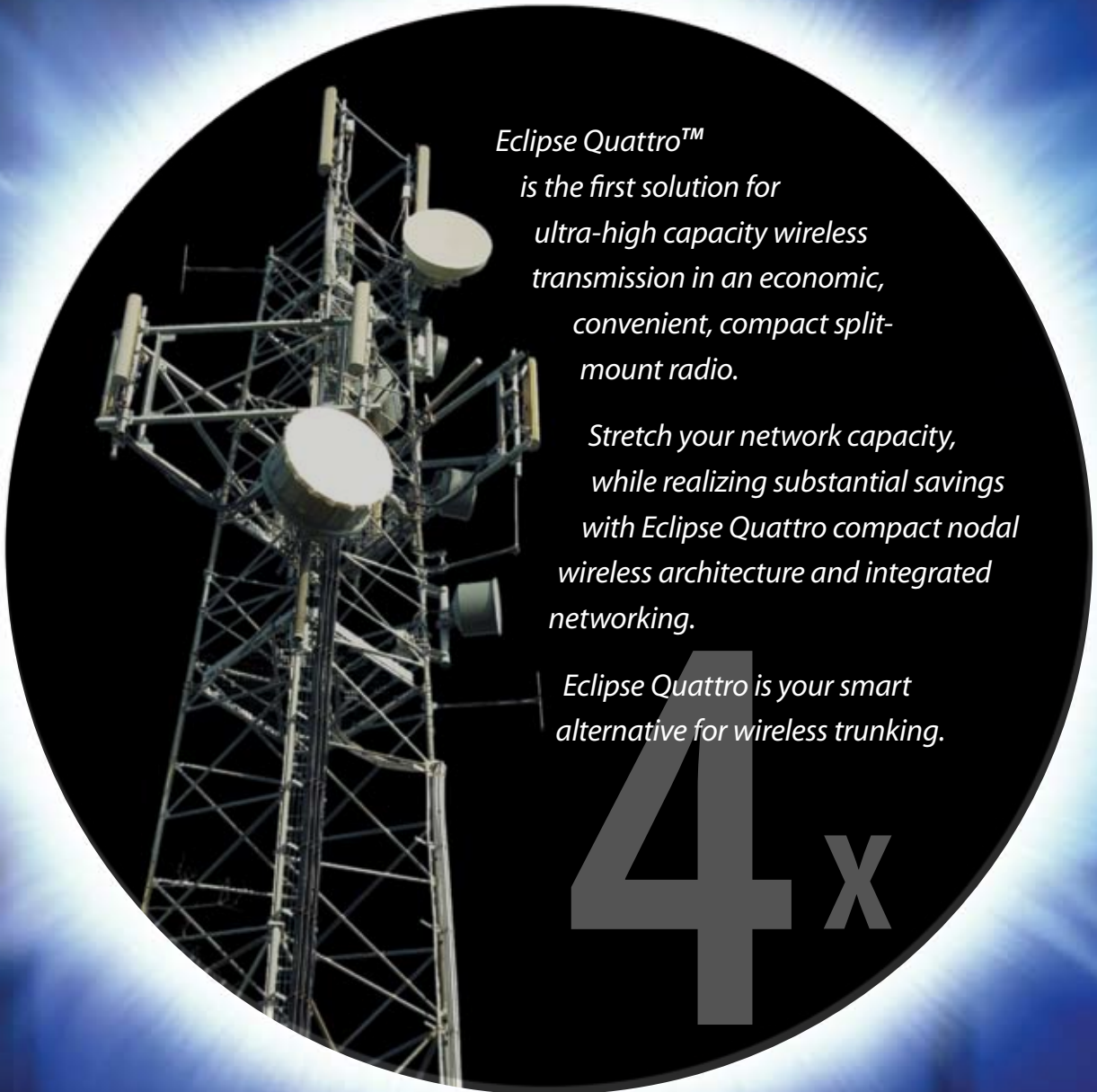
ECLIPSE QUATTRO





ECLIPSE

Q U A T T R O



*Eclipse Quattro™
is the first solution for
ultra-high capacity wireless
transmission in an economic,
convenient, compact split-
mount radio.*

*Stretch your network capacity,
while realizing substantial savings
with Eclipse Quattro compact nodal
wireless architecture and integrated
networking.*

*Eclipse Quattro is your smart
alternative for wireless trunking.*

4x

Switch to Eclipse. Save Today. Save Tomorrow.

stratex
NETWORKS

High Capacity in the Smallest Package

Why upgrade to large, expensive and impractical all-indoor 'trunking' radio systems when you could choose Eclipse Quattro—the smallest and most cost-effective solution available?

Ultra-high capacity. Expand your network capacity up to 256xE1, 336xDS1, 4xSTM1/OC3, or Fast and Gigabit Ethernet transport, all in one package.

Smallest package. Set up a full repeater station in just four rack units.

Lowest Cost. Eliminate the cost of SDH/SONET multiplexers, elliptical waveguide and pressurization systems.

High performance. Select 64 QAM modulation for higher system gain and improved fading performance.

Reduced Bandwidth. Choose co-channel operation using XPIC without changing your existing antennas.

Concentric Rings™ Design ultra-high capacity wireless rings with automatic path switching and integrated traffic access.

Integrated trunking/access solution. Add new links to existing nodes without adding additional indoor units.



High Capacity at the Lowest Cost

Summary System Specifications

General

Operating Frequency Range options		5, L6, U6, 7, 8, 11, 13, 15, 18, 23 GHz
Capacity Range options	Super-PDH	1x, 2x, 3x, 4x 64x E1
	Super-PDH	1x, 2x, 3x, 4x 84x DS1
	SDH/SONET	1x, 2x, 3x, 4x STM1/OC3
Modulation options		64, 128 QAM

Configurations Options

Terminal, 1+0, 2+0, 3+0, 4+0 Non Protected		5 - 23 GHz
Terminal Protected Hot Standby, 1+1, 2+2, 3+3, 4+4 with or without space/frequency diversity		5 - 23 GHz
Repeater with Add/Drop, 1+0, 2+0, 3+0, 4+0 Non Protected		5 - 15 GHz
Repeater with Add/Drop, Protected Hot Standby, 1+1, 2+2, 3+3, 4+4, with or without space/frequency diversity		5 - 15 GHz

RF Channel Arrangement Options

Adjacent Channel Alternate Polarisation (ACAP)		5 to 23 GHz
Adjacent Channel Co-Polarisation (ACCP)		5 to 23 GHz
Co-Channel Dual Polarisation with X-Pole Interference Cancellation (XPIC)		5 to 23 GHz
XPIC cross pole discrimination (XPD) improvement		> 20 dB

Standards Compliance

EMC		EN 301 489
Operation	Outdoor Equipment	ETS 300 019, Class 4.1
Operation	Indoor Equipment	ETS 300 019, Class 3.2
Storage		ETS 300 019, Class 1.2
Transportation		ETS 300 019, Class 2.3
Safety		EN 60950/UL 60950
Radio Frequency		EN 302 217/CFR 47, Part 101
Water Ingress	Outdoor Equipment	IEC 60529 (IPX6)/UL 50

* For detailed specifications for indoor and outdoor equipment, refer to the Eclipse ETSI or ANSI (as applicable) Platform Datasheet.
All specifications are subject to change without notice.



Stratex Networks, Eclipse, and ProVision are trademarks or registered trademarks of Stratex Networks or its subsidiaries in the United States and other countries.
© Stratex Networks, Inc. (2004 - 2006)

For more information please visit: www.stratexnetworks.com

Corporate Headquarters
Stratex Networks
120 Rose Orchard Way
San Jose, CA 95134
Telephone: +1.408.943.0777
Facsimile: +1.408.944.1648/9

To contact someone in your area choose one of the following email addresses:

North America
NorthAmerica@stratexnet.com

Latin America
LatinAmerica@stratexnet.com

Asia Pacific
AsiaPacific@stratexnet.com

Europe
Europe@stratexnet.com

Middle East and Africa
MEA@stratexnet.com

Sub-Saharan Africa
SouthAfrica@stratexnet.com



Franje Fuisa 12, 10000 Zagreb, Croatia
Tel: +385/ 1 / 36 36 884
Fax: +385/ 1 / 36 45 850
E-mail: microlink@microlink.hr
Web: <http://www.microlink.hr>

stratex
NETWORKS



CE06780

n° 113532

123EclipseQuattro_0806_U